

MagCore® Nucleic Acid Extraction Kits

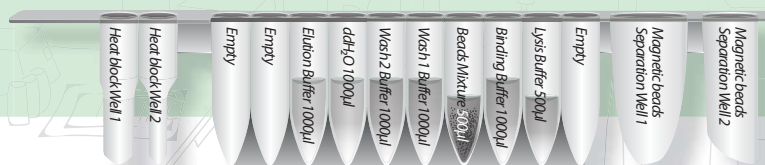


For extraction of genomic DNA from tissues, swabs, FFPE, stool, feed/soil and forensic samples

MagCore® Genomic DNA Tissue Kit is designed for purification of total DNA (including genomic, mitochondrial and viral DNA) from a variety of animal tissues or cells by using MagCore® auto-extraction instrument. The provided Filter Column can filtrate hard tissue sample or swab sample to prevent tissue residues to obstruct pipette tip during the process of MagCore®. The method uses pre-filled cartridges based on cellulose coated magnetic bead technology.

401

401 MagCore® Genomic DNA Tissue Kit



Features

1. Suitable for a wide variety of sample types, including forensic samples
2. Consistent and reproducible results
3. Purified DNA of approximately 20-30 kb in length is suitable for PCR or other enzymatic reactions.

Applications

MagCore® Genomic DNA Tissue kit allows processing multiple sample types in the same run, including:

1. Animal Tissues: Solid animal tissue, Stool samples
2. Swabs
3. Feed and soil samples
4. Formalin-fixed, Paraffin-embedded (FFPE) tissues samples (manual pretreatment)
5. Cultured Yeast samples
6. Forensics samples



Performance

DNA yield gained from 10 mg of mice tissue samples and 0.25 cm tail

| Mice tissue | Yield (ng/ul) |
|-------------|---------------|
| Liver | 17.5 |
| Spleen | 17.5 |
| Brain | 10 |
| Lung | 12.5 |
| Kidney | 32.5 |
| Tail | 7.5 |

Table 1. Genomic DNA was purified from 10mg of mice tissue samples and 0.25cm tail.

Yield and quality of gDNA purified using MagCore® 401 Extraction Kit

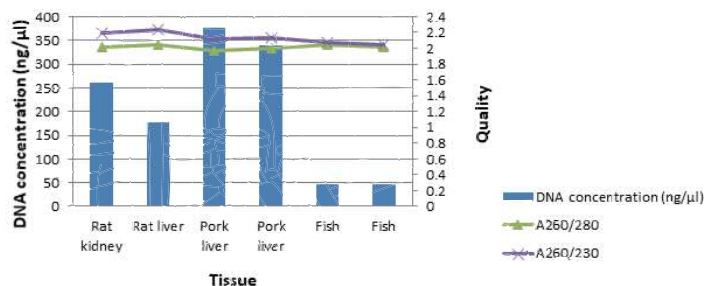


Figure 1. Genomic DNA from 10mg of various animal tissues were extracted by the MagCore®401 Genomic DNA Tissue Kit. DNA was eluted in 60 µL and quantitated using Nanodrop n-1000.

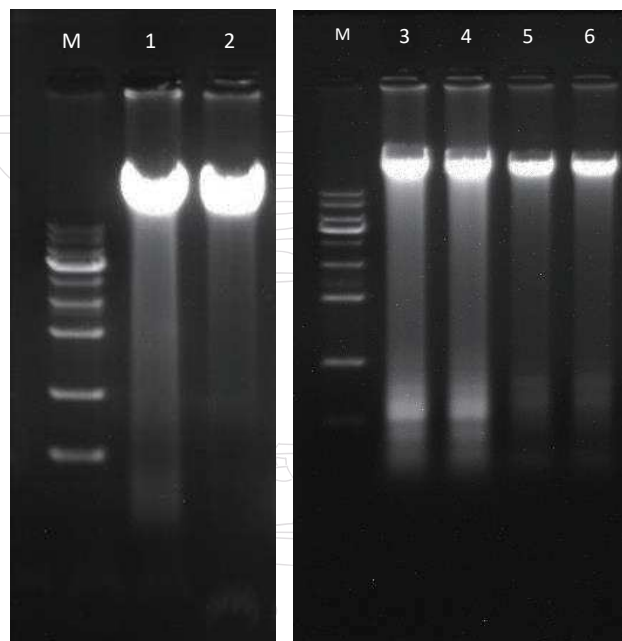


Figure 2. Agarose gel electrophoresis of the various animal tissue DNA was isolated from MagCore® automated extraction.; Lane M: RBC 1 kb DNA ladder Marker; Lane 1: Rat kidney; Lane 2: Rat liver; Lane 3-4: Pork liver; Lane 5-6: Fish tissue.

MagCore® Automated Nucleic Acid Kits Specification

| MagCore® Super/HF16 Plus/Plus II | | | | | MagCore® HF16/Compact/HF48 | | | |
|----------------------------------|--|--|---------|--------------|----------------------------|---------|-------------------------------|--------------|
| Cartridge Code | Cat.No. | Cat.No. | Cat.No. | Running Time | Cat.No. | Cat.No. | Cat.No. | Running Time |
| | 36 preps | 72preps | 96preps | | 36 preps | 72preps | 96preps | |
| 401 | MagCore® Genomic DNA Tissue Kit | | | | | | | |
| | For tissue and forensic samples (up to 40mg) | | | | | | | |
| | Contents: Pre-Filled Cartridges, Filter Column Sets, GT Buffer, Proteinase K, PK Storage Buffer, Disposable Tip & Holder Sets, Sample Tubes, Elution Tubes | | | | | | | |
| | Shelf life: 18 months | | | | | | | |
| MGT-01 | MGT-02 | 33 min (sample volume:400 µl) * optical detection is not provided | | | MGT-01 | MGT-02 | 33 min (sample volume:400 µl) | |

Enzyme Selection Guide

| Product | Contents | Cat. No. |
|------------------|---|----------|
| Proteinase K Set | 11 mg Proteinase K, 1.25 ml PK Storage Buffer | PK011 |
| RNase A | 50 µl RNase A (50mg/ml) | RN050 |
| | 130 µl RNase A (50mg/ml) | RN130 |



RBC Bioscience Corp.
www.rbcbioscience.com
info@rbcbioscience.com